

Outer Dowsing Offshore Wind

Plans

2.16 Statutory and Non-Statutory Nature Conservation Sites Plan Offshore

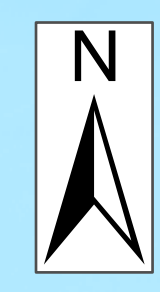
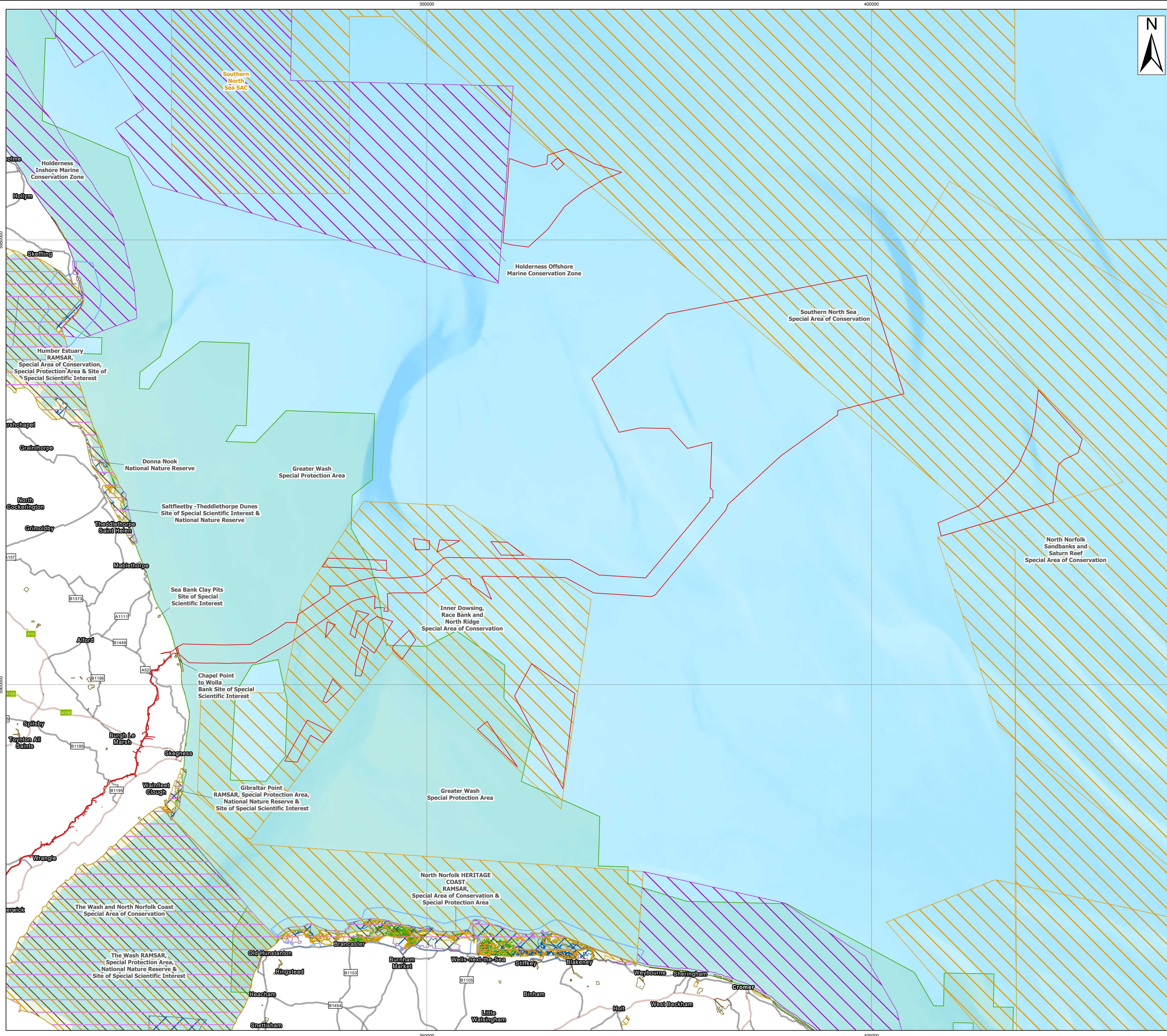
Date: September 2024

Document Reference: 2.16

Pursuant to APFP Regulation: 5(2)(f)(i)

Rev: 3.0

Company:		Outer Dowsing Offshore Wind		Asset:		Whole Asset	
Project:		Whole Wind Farm		Sub Project/Package:		Whole Asset	
Document Title or Description:		2.16 Statutory and Non-Statutory Nature Conservation Sites Plan Offshore					
Internal Document Number:		PP1-ODOW-DEV-CS-PLN-0026_03		3 rd Party Doc No (If applicable):		N/A	
Rev No.	Date	Status / Reason for Issue	Author	Checked by	Reviewed by	Approved by	
1.0	March 2024	DCO Application	Outer Dowsing	Shepherd & Wedderburn	Outer Dowsing	Outer Dowsing	
2.0	July 2024	Response to Section 51 Advice	Outer Dowsing	Shepherd & Wedderburn	Outer Dowsing	Outer Dowsing	
3.0	September 2024	Procedural Deadline 19 September	Outer Dowsing	Shepherd & Wedderburn	Outer Dowsing	Outer Dowsing	



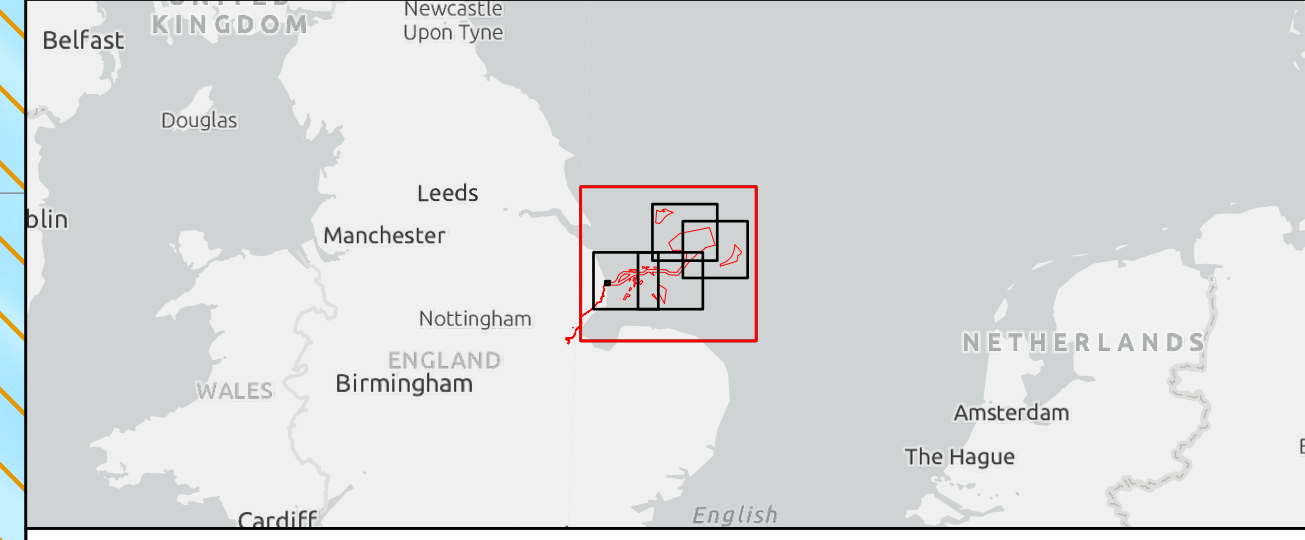
- Legend**
- Order Limits
 - Special Protection Areas (SPA)
 - Marine Conservation Zones (MCZ)
 - Sites Of Special Scientific Interest (SSSI)
 - Heritage Coast
 - National Nature Reserves (NNR)
 - RAMSAR
 - Special Areas of Conservation (SAC)

Source:
 Contains Esri UK, Esri, TomTom, Garmin, FAO, NOAA, USGS, Esri UK, Esri, TomTom, Garmin, Foursquare, METI/NASA, USGS.
 Contains OS data @ Crown Copyright and database right 2022. All rights reserved.

Notes:

Status:
Pre-examination update

Offshore Coordinate System
 Datum: WGS 1984
 Spheroid: WGS 1984
 Projection: UTM Zone 31N
 Central Meridian: 3 E
 Vertical Reference: LAT (Lowest Astronomical Tide)



Outer Dowsing Offshore Wind 2.16 Statutory and Non-Statutory Nature Conservation Sites Plan Offshore V3 DCO Application

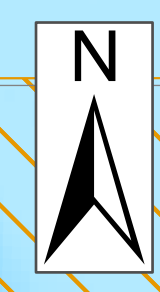
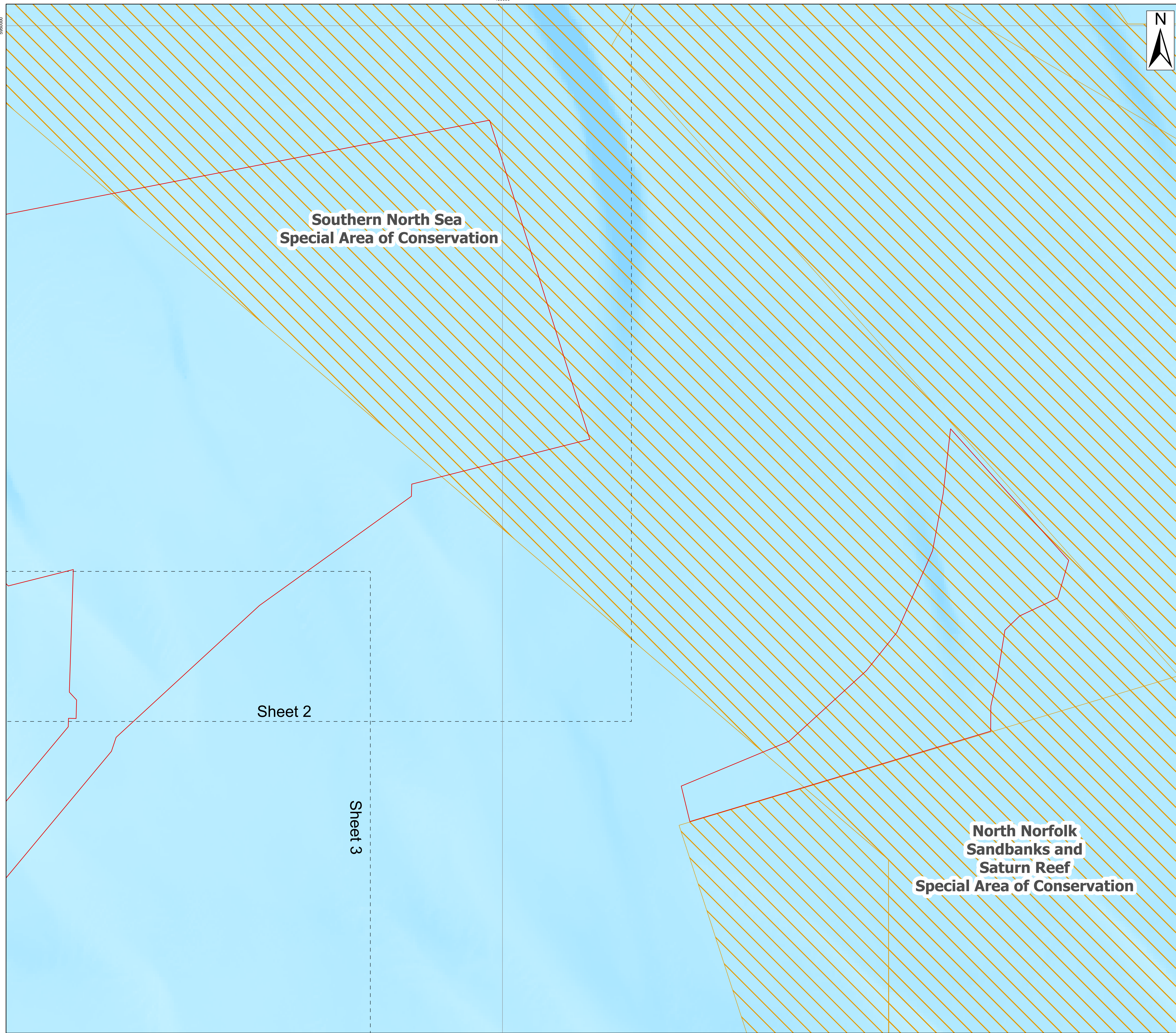
Drawing No: PP1-ODOW-DEV-CS-PLN-0026_03

Drawing: Overview Sheet Page Size: A1

Rev No:	Date	Description	Drawn	Checked	Approved
1.0	March 2024	DCO Application Issue	TD	ODOW	ODOW
2.0	June 2024	Response to Section 51 Advice	GC	ODOW	ODOW
3.0	Sept 2024	Response to Rule 17 Letter Dated 31 July 2024	GC	ODOW	ODOW



This document may only be used for the purpose for which it was commissioned and in accordance with the terms of engagement for that commission. Unauthorised use of this document in any form whatsoever is prohibited.

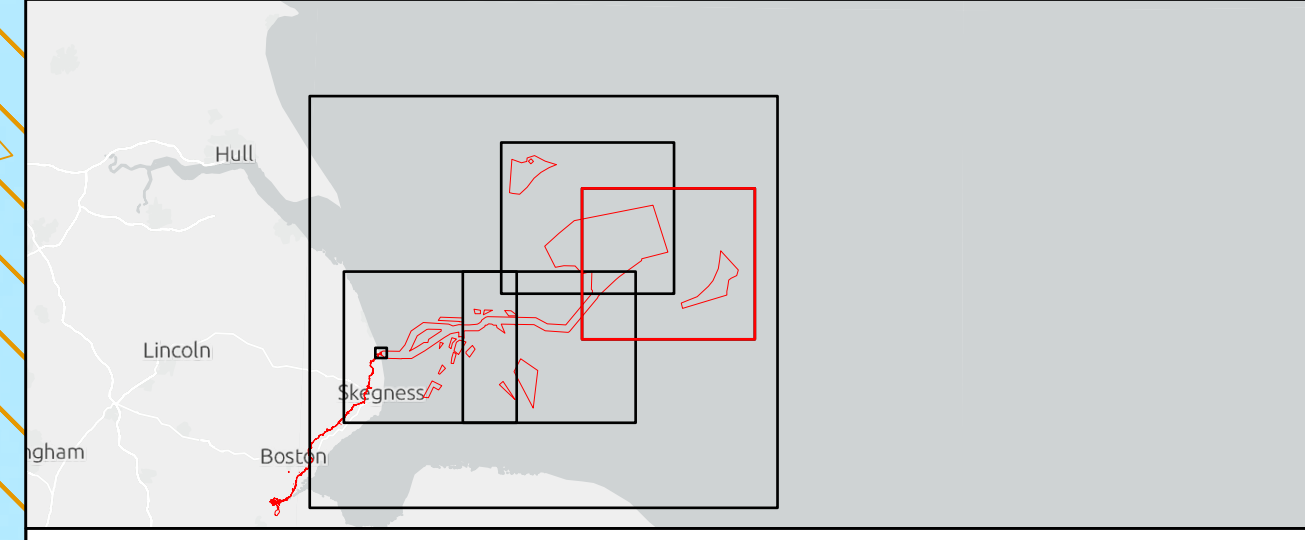


- Legend**
- Order Limits
 - Special Areas of Conservation (SAC)

Source:
 Contains Esri UK, Esri, TomTom, Garmin, Foursquare, GeoTechnologies, Inc, METI/NASA, USGS, Esri UK, Esri, TomTom, Garmin, FAO, NOAA, USGS. Contains OS data @ Crown Copyright and database right 2022. All rights reserved.

Notes:	Status: Pre-examination update
---------------	--

Offshore Coordinate System
 Datum: WGS 1984
 Spheroid: WGS 1984
 Projection: UTM Zone 31N
 Central Meridian: 3 E
 Vertical Reference: LAT (Lowest Astronomical Tide)



**Outer Dowsing Offshore Wind
 2.16 Statutory and Non-Statutory Nature
 Conservation Sites Plan Offshore V3
 DCO Application**

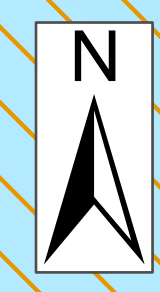
Drawing No: PP1-ODOW-DEV-CS-PLN-0026_03

Drawing: 1 of 5 Page Size: A1

Rev No:	Date	Description	Drawn	Checked	Approved
1.0	March 2024	DCO Application Issue	TD	ODOW	ODOW
2.0	June 2024	Response to Section 51 Advice	GC	ODOW	ODOW
3.0	Sept 2024	Response to Rule 17 Letter Dated 31 July 2024	GC	ODOW	ODOW



This document may only be used for the purpose for which it was commissioned and in accordance with the terms of engagement for that commission. Unauthorised use of this document in any form whatsoever is prohibited.

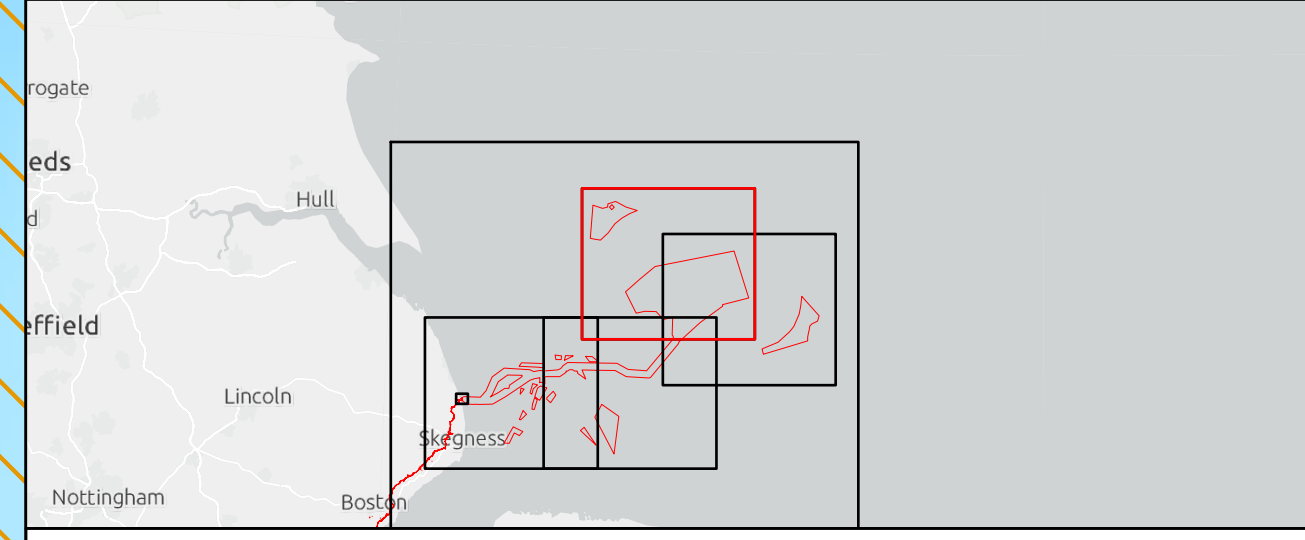


- Legend**
- Order Limits
 - Marine Conservation Zones (MCZ)
 - Special Areas of Conservation (SAC)

Source:
 Contains Esri UK, Esri, TomTom, Garmin, Foursquare, GeoTechnologies, Inc, METI/NASA, USGS, Esri UK, Esri, TomTom, Garmin, FAO, NOAA, USGS. Contains OS data @ Crown Copyright and database right 2022. All rights reserved.

Notes:	Status: Pre-examination update
---------------	--

Offshore Coordinate System
 Datum: WGS 1984
 Spheroid: WGS 1984
 Projection: UTM Zone 31N
 Central Meridian: 3 E
 Vertical Reference: LAT (Lowest Astronomical Tide)



**Outer Dowsing Offshore Wind
 2.16 Statutory and Non-Statutory Nature
 Conservation Sites Plan Offshore V3
 DCO Application**

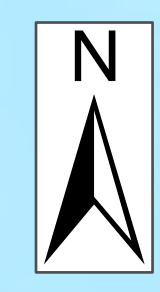
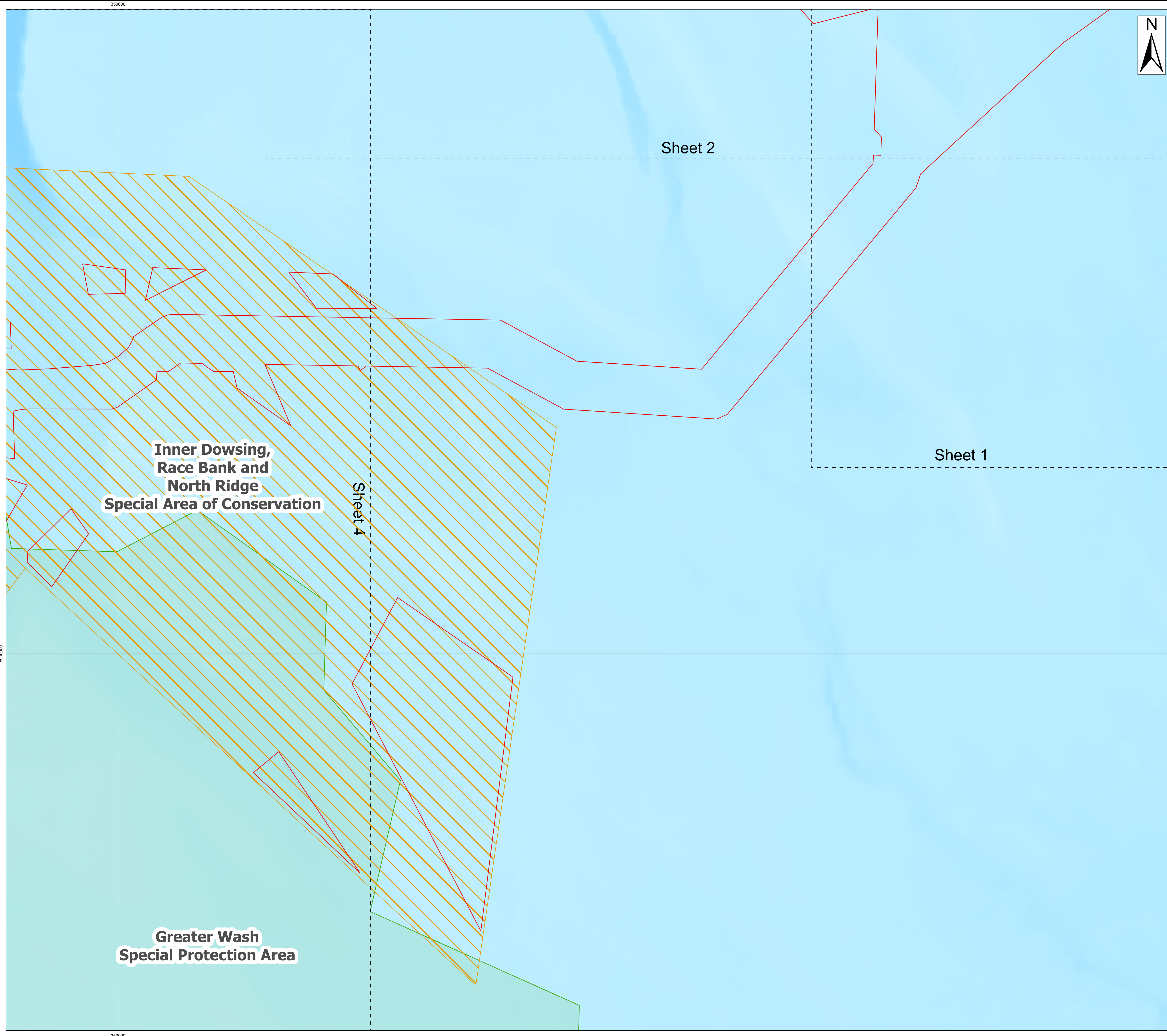
Drawing No: PP1-ODOW-DEV-CS-PLN-0026_03

Drawing: 2 of 5 Page Size: A1

Rev No:	Date	Description	Drawn	Checked	Approved
1.0	March 2024	DCO Application Issue	TD	ODOW	ODOW
2.0	June 2024	Response to Section 51 Advice	GC	ODOW	ODOW
3.0	Sept 2024	Response to Rule 17 Letter Dated 31 July 2024	GC	ODOW	ODOW



This document may only be used for the purpose for which it was commissioned and in accordance with the terms of engagement for that commission. Unauthorised use of this document in any form whatsoever is prohibited.

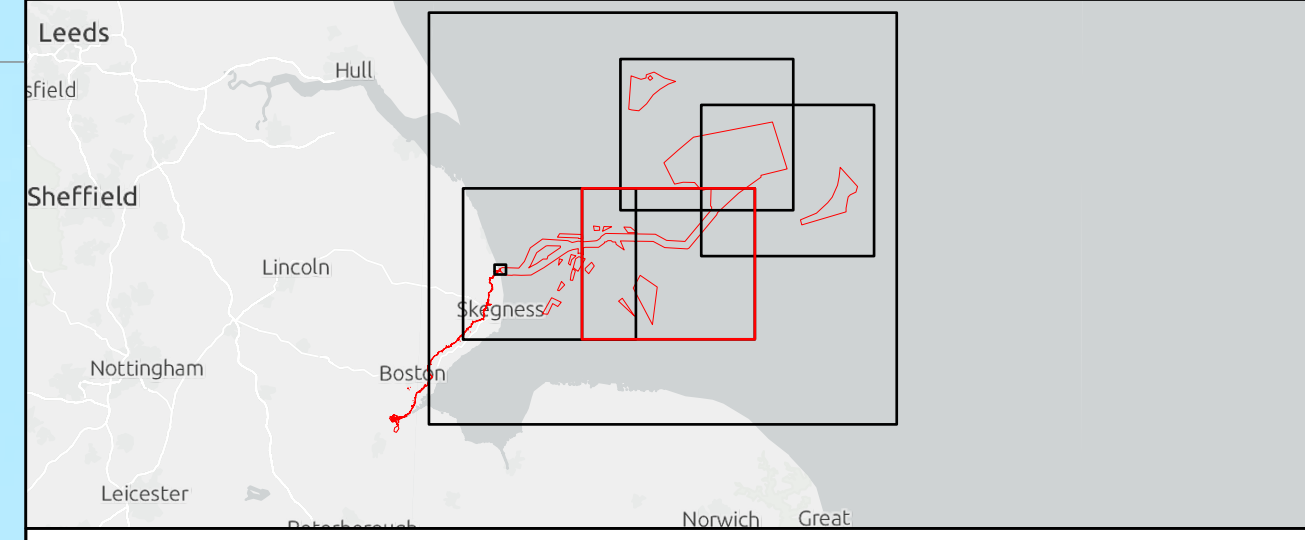


- Legend**
- Order Limits
 - Special Protection Areas (SPA)
 - Special Areas of Conservation (SAC)

Source:
 Contains Esri UK, Esri, TomTom, Garmin, Foursquare, GeoTechnologies, Inc, METI/NASA, USGS, Esri UK, Esri, TomTom, Garmin, FAO, NOAA, USGS. Contains OS data @ Crown Copyright and database right 2022. All rights reserved.

Notes:	Status: Pre-examination update
---------------	--

Offshore Coordinate System
 Datum: WGS 1984
 Spheroid: WGS 1984
 Projection: UTM Zone 31N
 Central Meridian: 3 E
 Vertical Reference: LAT (Lowest Astronomical Tide)



**Outer Dowsing Offshore Wind
 2.16 Statutory and Non-Statutory Nature
 Conservation Sites Plan Offshore V3
 DCO Application**

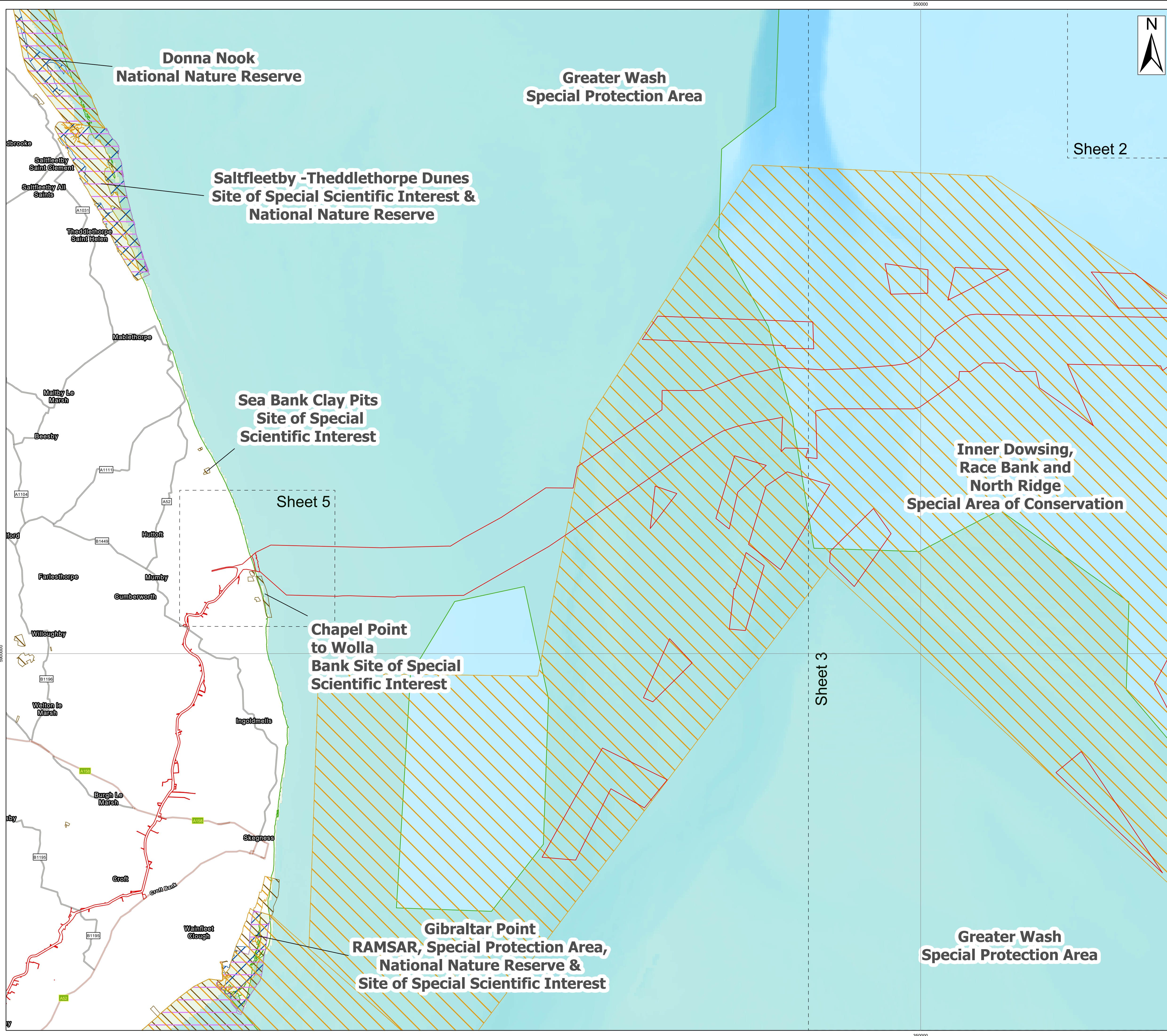
Drawing No: PP1-ODOW-DEV-CS-PLN-0026_03

Drawing: 3 of 5 Page Size: A1

Rev No:	Date	Description	Drawn	Checked	Approved
1.0	March 2024	DCO Application Issue	TD	ODOW	ODOW
2.0	June 2024	Response to Section 51 Advice	GC	ODOW	ODOW
3.0	Sept 2024	Response to Rule 17 Letter Dated 31 July 2024	GC	ODOW	ODOW



This document may only be used for the purpose for which it was commissioned and in accordance with the terms of engagement for that commission. Unauthorised use of this document in any form whatsoever is prohibited.



- Legend**
- Order Limits
 - Special Protection Areas (SPA)
 - Sites Of Special Scientific Interest (SSSI)
 - National Nature Reserves (NNR)
 - RAMSAR
 - Special Areas of Conservation (SAC)

Sheet 2

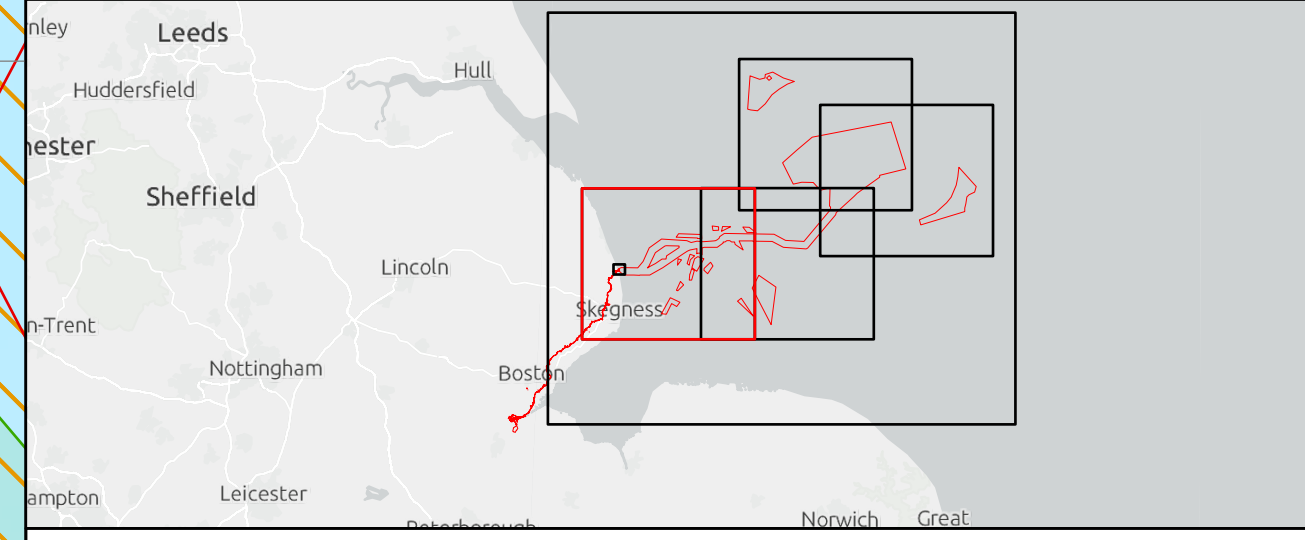
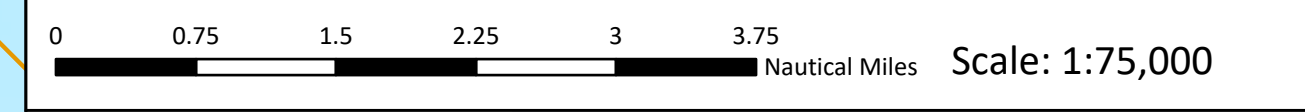
Sheet 5

Sheet 3

Source:
Contains Esri UK, Esri, TomTom, Garmin, Foursquare, GeoTechnologies, Inc, METI/NASA, USGS, Esri UK, Esri, TomTom, Garmin, FAO, NOAA, USGS. Contains OS data @ Crown Copyright and database right 2022. All rights reserved.

Notes:	Status: Pre-examination update
--------	-----------------------------------

Offshore Coordinate System
Datum: WGS 1984
Spheroid: WGS 1984
Projection: UTM Zone 31N
Central Meridian: 3 E
Vertical Reference: LAT (Lowest Astronomical Tide)



**Outer Dowsing Offshore Wind
2.16 Statutory and Non-Statutory Nature
Conservation Sites Plan Offshore V3
DCO Application**

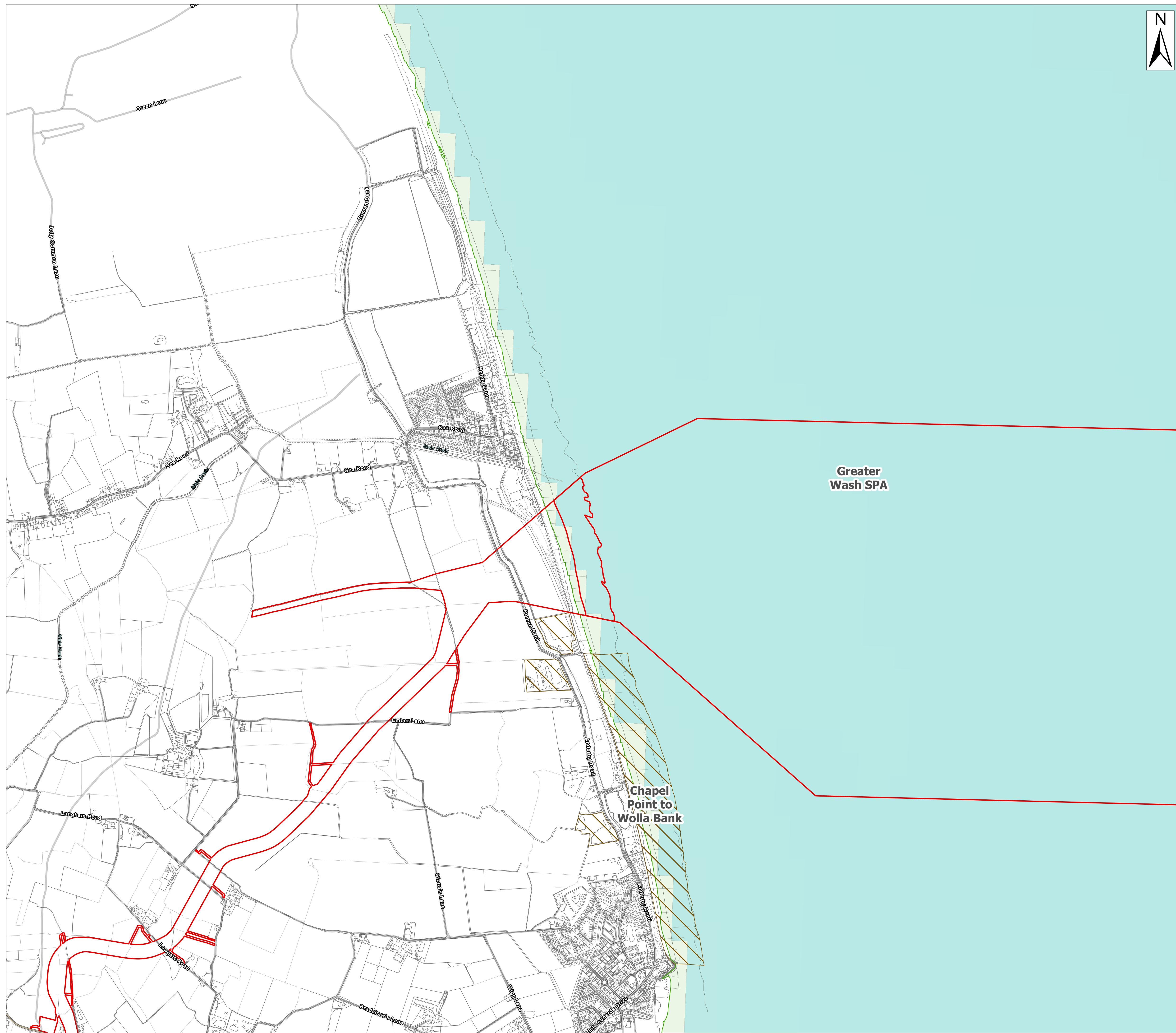
Drawing No: PP1-ODOW-DEV-CS-PLN-0026_03

Drawing: 4 of 5 Page Size: A1

Rev No:	Date	Description	Drawn	Checked	Approved
1.0	March 2024	DCO Application Issue	TD	ODOW	ODOW
2.0	June 2024	Response to Section 51 Advice	GC	ODOW	ODOW
3.0	Sept 2024	Response to Rule 17 Letter Dated 31 July 2024	GC	ODOW	ODOW



This document may only be used for the purpose for which it was commissioned and in accordance with the terms of engagement for that commission. Unauthorised use of this document in any form whatsoever is prohibited.

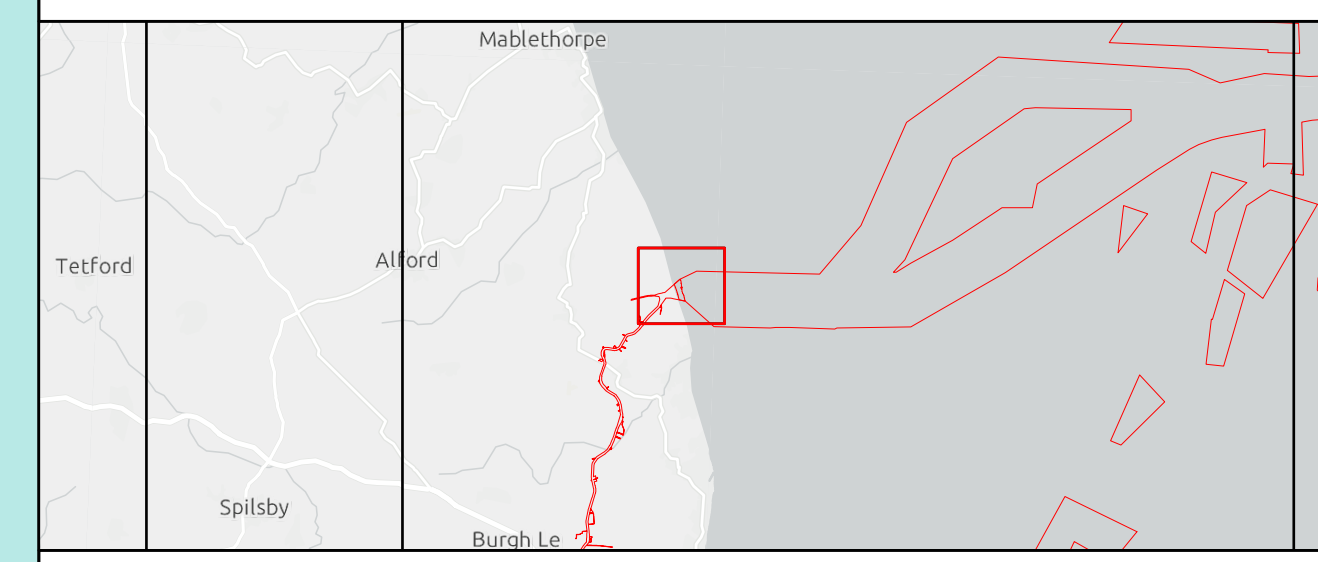
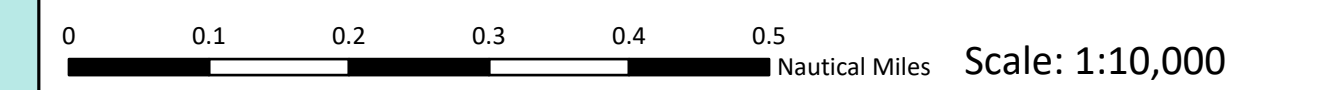


- Legend**
- Order Limits
 - Special Protection Areas (SPA)
 - Sites Of Special Scientific Interest (SSSI)

Source:
 Contains Esri Community Maps Contributors, Esri UK, Esri, TomTom, Garmin, Foursquare, GeoTechnologies, Inc, METI/NASA, USGS, Esri UK, Esri, TomTom, Garmin, Foursquare, METI/NASA, USGS.
 Contains OS data @ Crown Copyright and database right 2022. All rights reserved.

Notes:	Status: Pre-examination update
---------------	--

Offshore Coordinate System
 Datum: WGS 1984
 Spheroid: WGS 1984
 Projection: UTM Zone 31N
 Central Meridian: 3 E
 Vertical Reference: LAT (Lowest Astronomical Tide)



**Outer Dowsing Offshore Wind
 2.16 Statutory and Non-Statutory Nature
 Conservation Sites Plan Offshore V3
 DCO Application**

Drawing No: PP1-ODOW-DEV-CS-PLN-0026_03

Drawing: 5 of 5 Page Size: A1

Rev No:	Date	Description	Drawn	Checked	Approved
1.0	March 2024	DCO Application Issue	TD	ODOW	ODOW
2.0	June 2024	Response to Section 51 Advice	GC	ODOW	ODOW
3.0	Sept 2024	Response to Rule 17 Letter Dated 31 July 2024	GC	ODOW	ODOW



This document may only be used for the purpose for which it was commissioned and in accordance with the terms of engagement for that commission. Unauthorised use of this document in any form whatsoever is prohibited.